



SMART POOL TECHNOLOGY  
MADE IN AUSTRIA

**PERAQUA®**



**Ø400**  
**LARGE LID**

**smart**  
**POLYESTER FILTER**

**BREGENZ II**

**UNIQUE**  
**USER FRIENDLY**  
**FILTER COVER**

**USER FRIENDLY**  
**MAINTENANCE**

The filter is designed very user friendly and in a way to facilitate inspections and maintenance.

**USEFUL VISIBILITY**

The filter is equipped with a marked transparent window showing the sand level.

**smart**  
**POLYESTER FILTER**

# BREGENZ II

**Smart Polyester Filter BREGENZ II** has been designed in a way to facilitate inspections and maintenance, the filter body is completely in ISPTHALIC resin, special fiberglass and UV-resistant gelcoat finishing.

Construction technology of the filter body has been developed with a geometry particularly suitable for containing the pressure and with careful selection of raw materials and consolidated application solutions, glass with interwoven fibers guarantee a mechanical resistance to continuous working stresses, the filter is exposed to pressure fluctuations due to valve closing / opening and pump start / stop.

## TECHNICAL DETAILS

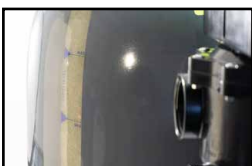
- > Laminated filters in special fiberglass
- > External finish in gelcoat resistant to UV rays
- > Large Ø400mm lid in reinforced PP
- > PVC external unions PN16
- > Internal maintenance union
- > Higher filtration bed for increased filtration
- > Large filter drain 1¼"
- > Nickel-plated brass adapter to avoid threading of the pressure gauge directly on the plastic
- > Anti-seize nickel-plated brass cover nuts
- > Protective band
- > RAL 7024 graphit grey



A Ø400 lid in reinforced PP for all models (available also in non-transparent version)



A larger filter drain of 1¼ for faster emptying



Marked transparent window showing sand level.



## TECHNICAL DATA

**Ø400**  
**LARGE LID**

**HIGHER**  
**FILTRATION BED**

**1¼"**  
**LARGER DRAIN**

**<42 °C**  
**WORKING TEMP.**

**2.5 BAR**  
**WORKING PRESSURE**

**3.75 BAR**  
**TESTING PRESSURE**

## CONTROL

Original Praher 6-Way Backwash Valve included, for manual control of the filtration process, 1½" connection, white version on request, different colours and connections available

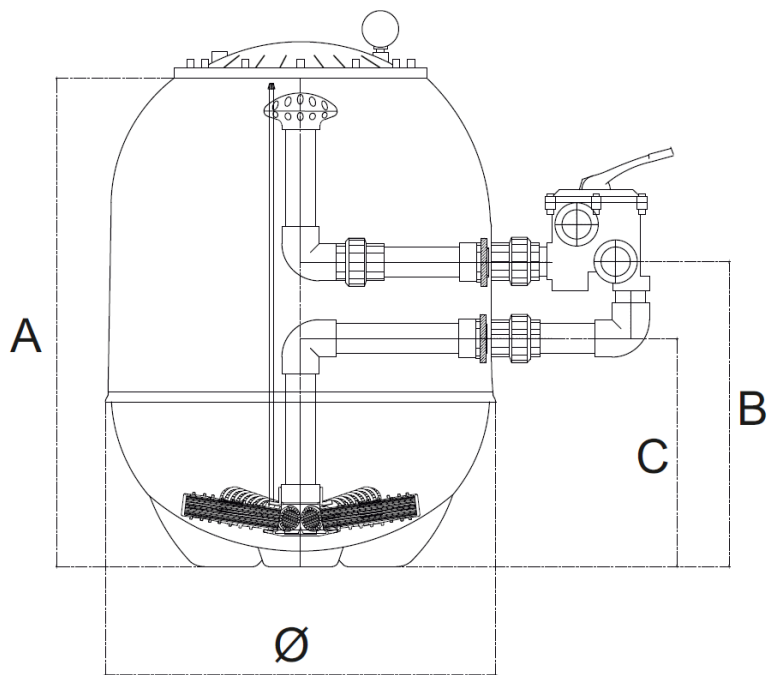


**MANUAL**

Automatic filtration process with PERAQUA automatic Aquastar® 6-way backwash valve series & Loxone Aquastar® Air pool control, maximum safety and convenient filtration.



**AUTOMATIC**



## TECHNICAL SPECIFICATION

MODEL	PROD. NO.	Ø MM	FLOW m <sup>3</sup> /h	CONNECTION	DIMENSIONS			FILTRATION BED HEIGHT mm	Glass media NATURE WORKS kg	Filter Sand kg
					A	B	C			
BREGENZ II 520	7300243	520	10	1½"	730	480	355	480	100	100
BREGENZ II 640	7300244	640	14	1½"	800	530	405	504	140	150
BREGENZ II 640	7300245	640	16	2"	800	500	360	504	140	150
BREGENZ II 760	7300246	760	23	2"	970	580	440	598	220	225
BREGENZ II 900	7300247	900	32	2"	970	580	440	601	340	350

\*recommended min. grain size: 0.4 – 0.8 mm